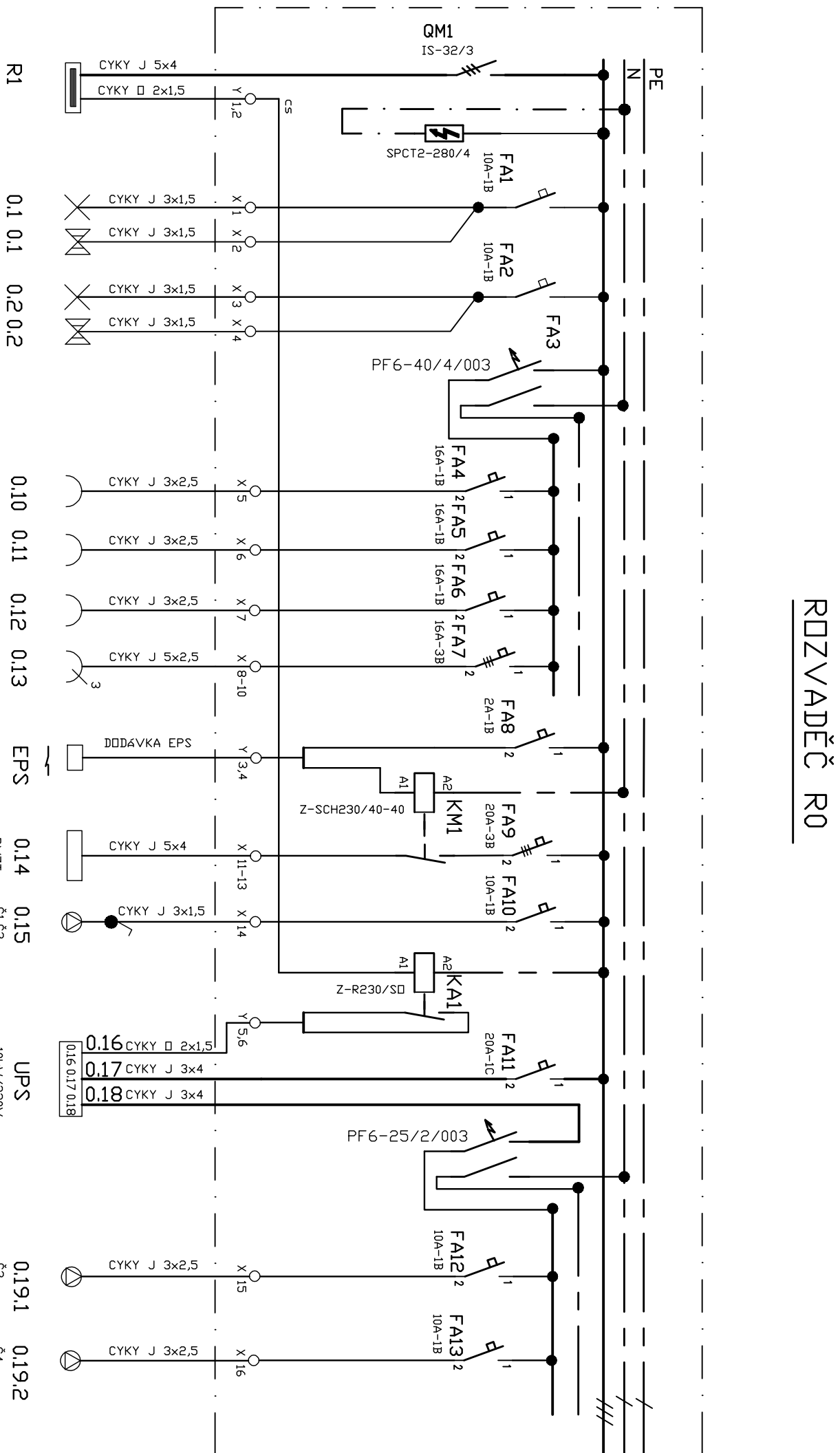
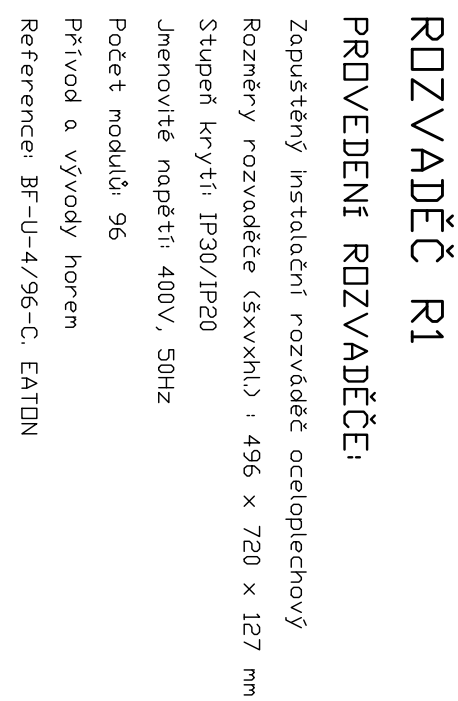
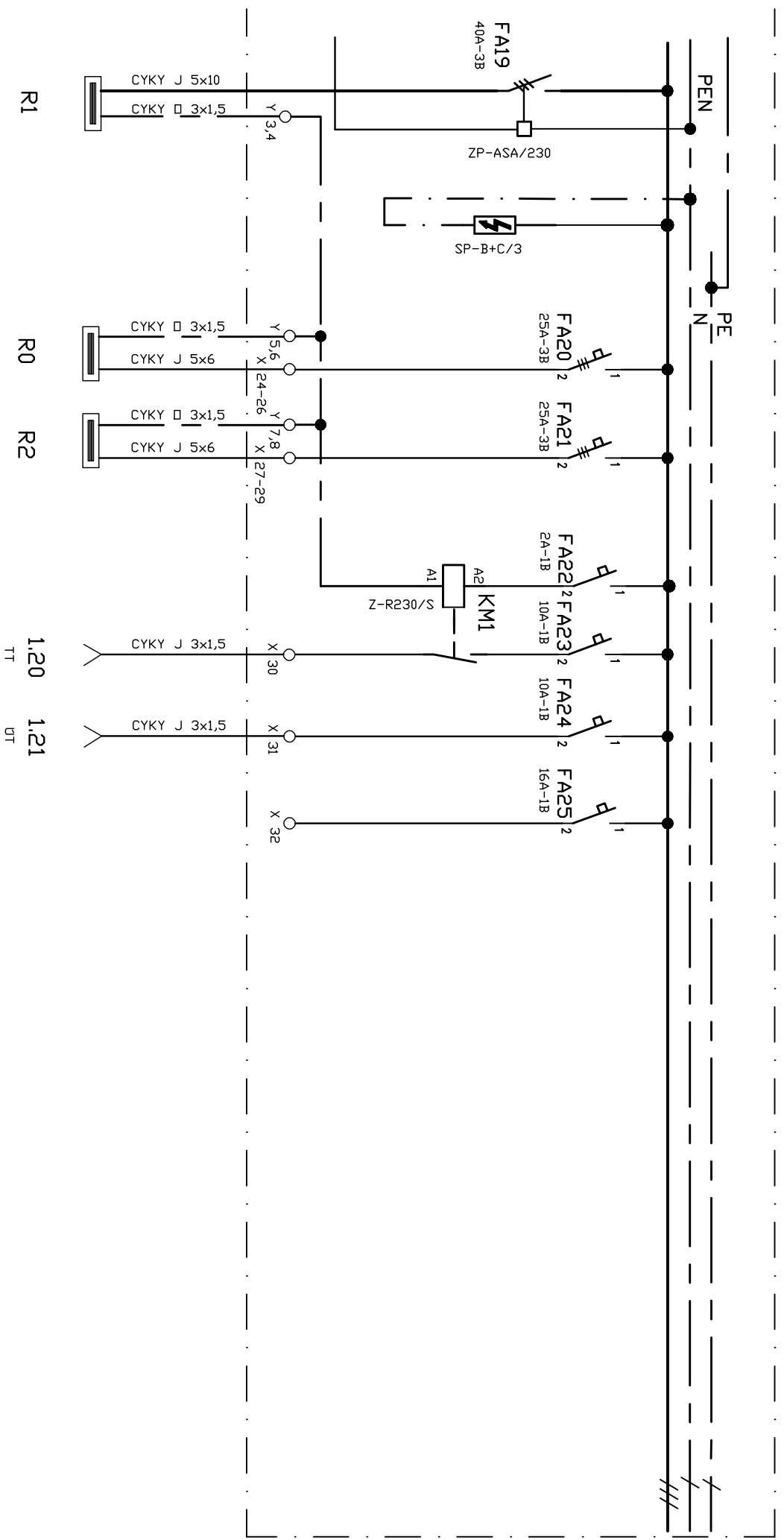
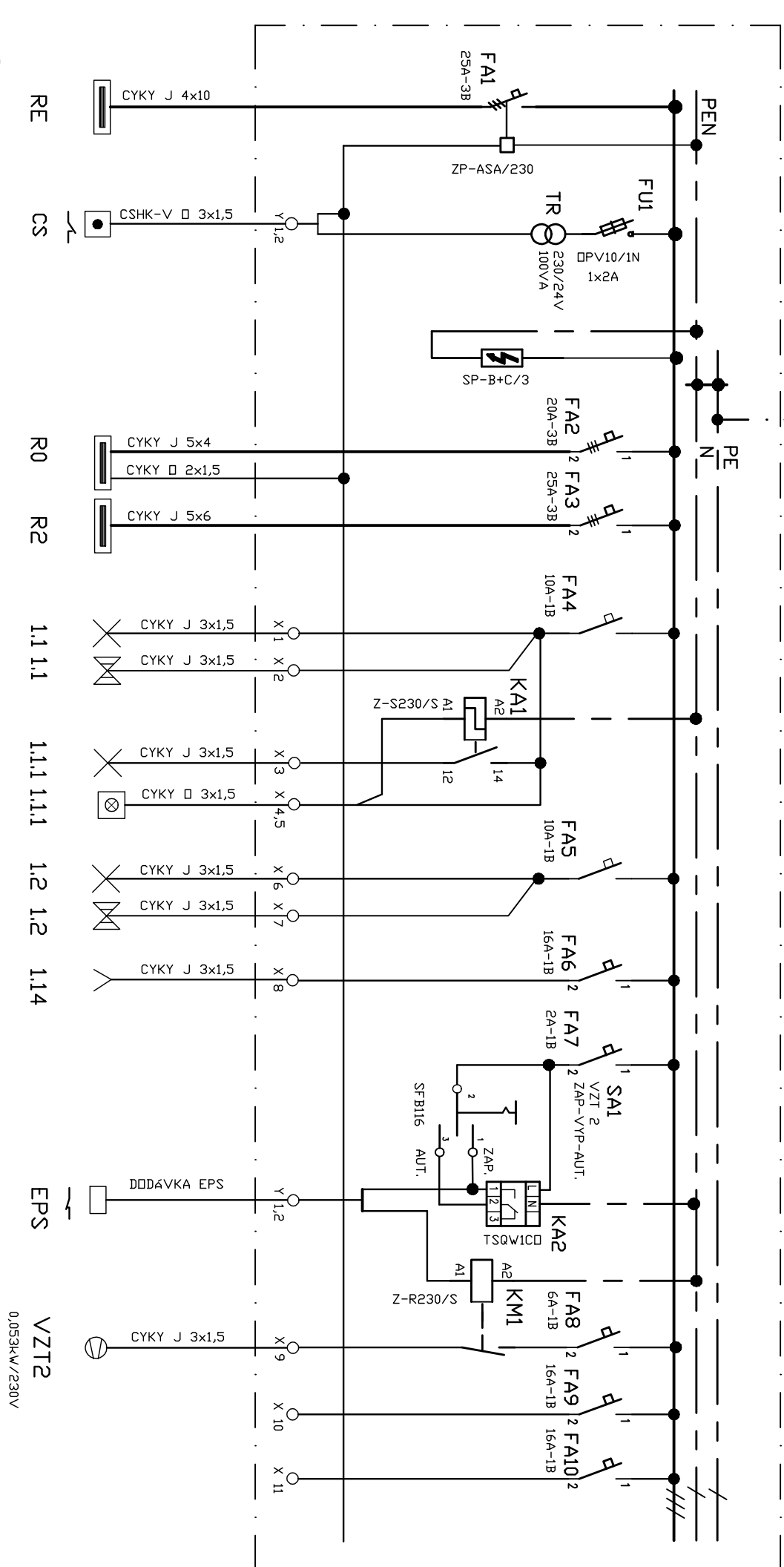
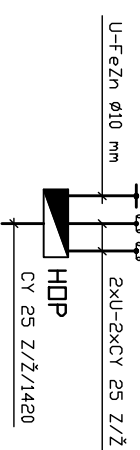
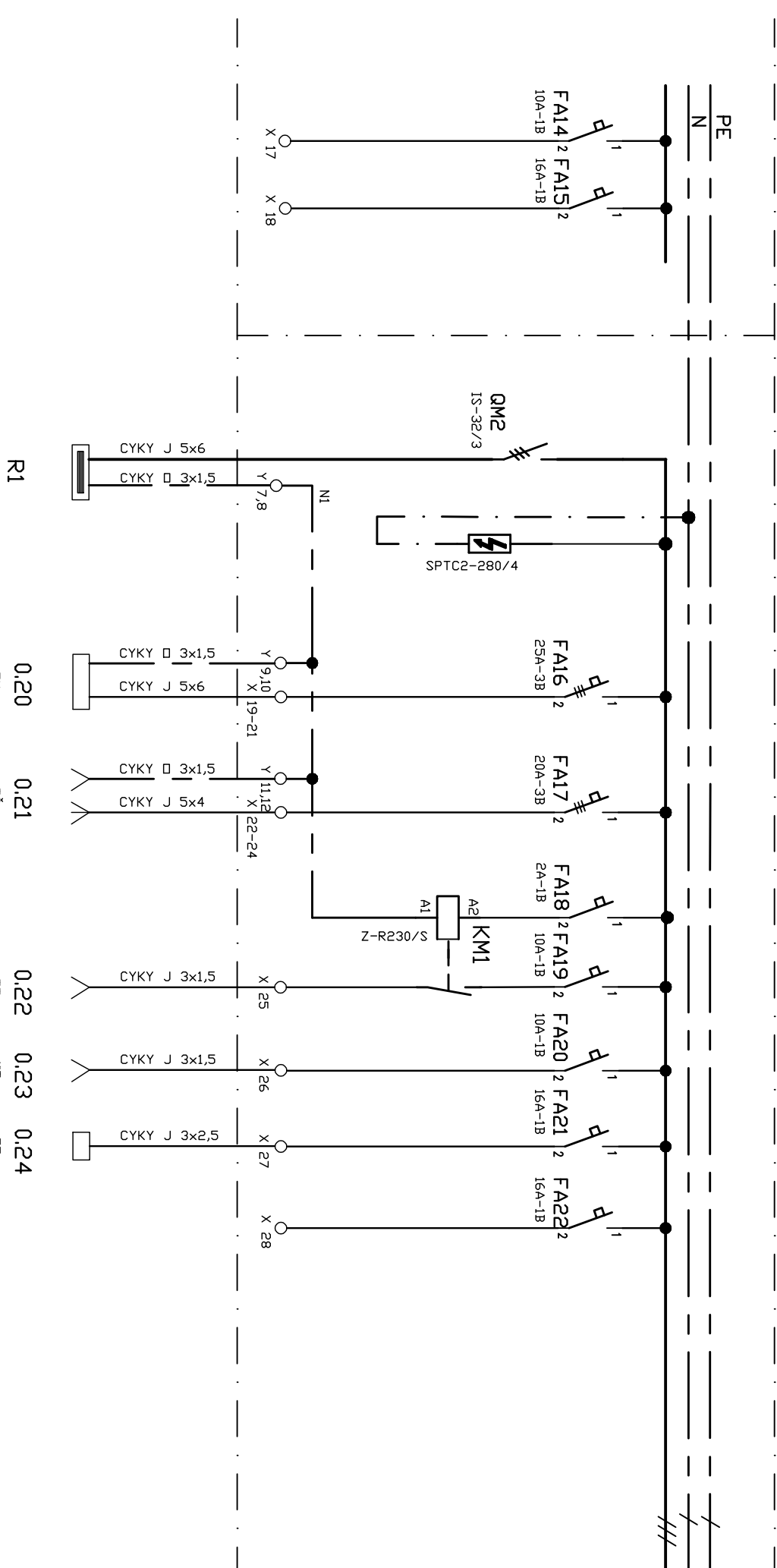
[illegible][illegible][illegible]

Diagram illustrating a power distribution system (Single-line diagram). The system includes a main busbar (R1) connected to a transformer (R2) and a generator (R3). The busbar is labeled "R1" and has a voltage of "120 V". The transformer is labeled "R2" and has a voltage of "120 V". The generator is labeled "R3" and has a voltage of "120 V". The diagram shows various electrical components and their connections, including switches, fuses, and meters. The busbar is connected to a network of lines and equipment. The diagram is a single-line representation of a three-phase system.

[illegible][illegible]